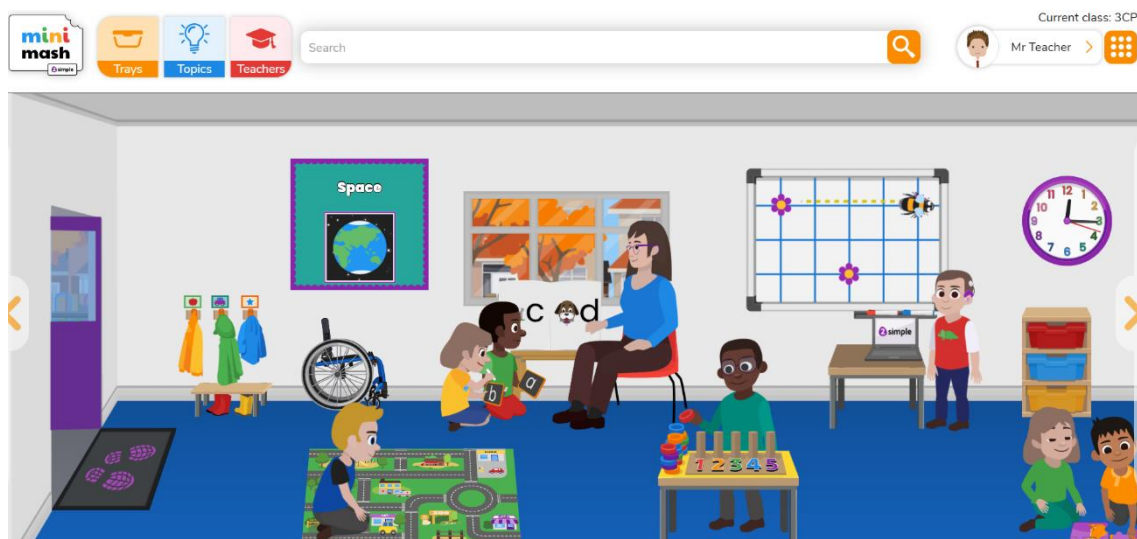


# Mini Mash: Parent Guide

Mini Mash is a platform designed for learners aged 3-5, where children can learn through play. Mini Mash is set out just like an early learning setting, mirroring the areas of learning which your child may be familiar with. This includes an indoor and an outdoor area, which you can access by clicking on the purple door. All these different areas, as in a real-life setting, are linked to the key areas of learning and development in early years.



As you move around the space, you will hear the children naming the different areas of learning. Within each area, you will find lots of different resources which should support most of the common topics covered in early years.

## Areas inside:

**Reading and Writing** - By clicking on the teacher or the two children on the floor, your child will access activities to develop their reading and writing skills. They can create their own stories, practise their alphabet and sound recognition, and write words using their phonics skills.

**Numbers and counting** - By clicking on the boy with the number game, you are taken to the maths area. Here, children can practise number recognition, record their counting on a variety of 2count picture graphs. They can also explore shape, space and measures.

**Computing** - Clicking on the laptop or the screen with the animated bee, will launch a program called 2Go. This program lets children explore giving simple instructions to an onscreen object with the intention of making it move to desired locations on attractive themed backgrounds.

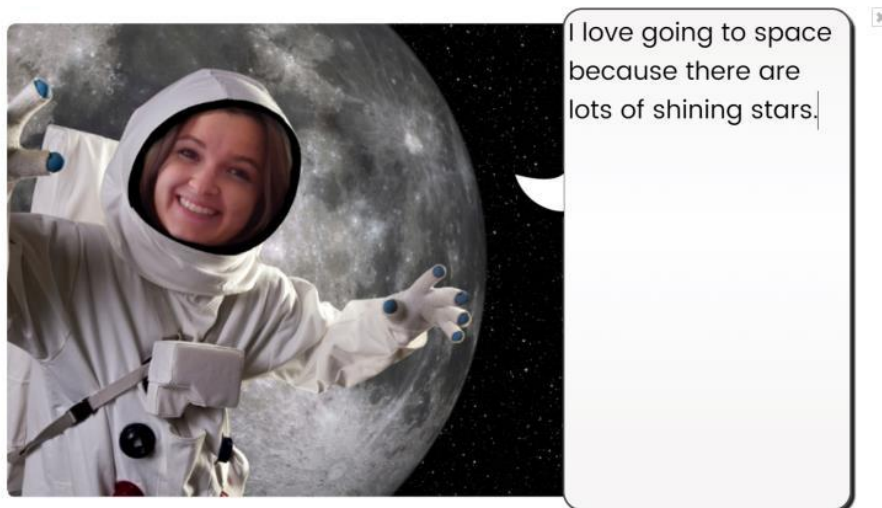
## **Need more support? Contact us:**

Tel: +44(0)208 203 1781 | Email: support@2simple.com | Twitter: @2simplesoftware

**Games** - Clicking on the children with a puzzle on the floor, your child will be able to solve simple jigsaws and memory game activities which are themed to relate to topics likely to be taught in early years.

**Simple City** - Clicking on the vehicle mat on the floor, takes you to Simple City. Simple City allows your child to explore, discuss and ask questions about different areas in the community. Areas in Simple City include: the vets, the garden centre, the zoo, the farm and many others.

**Role play** - The 'Mashcams' here allow children to take a picture of themselves and imagine themselves as a variety of different characters. This can be an excellent exercise for children to develop their communication, imagination and self-confidence. Children can draw, record their voice, mark-make using the pens or type their own words about what their character might be feeling or saying.



### Areas outside

**Drawing and painting** - Clicking on the painting that the children are creating, brings up paint projects. In this area, there are a wealth of different paint projects which your child can explore and experiment with independently.

**Music and sounds** - Clicking on the child making music brings up the music area. Children can practise their expressive art skills using 2Beat and 2Explore. They can produce and record their own music sequences, exploring beat and rhythm with a wide variety of different sounds.

**Need more support? Contact us:**

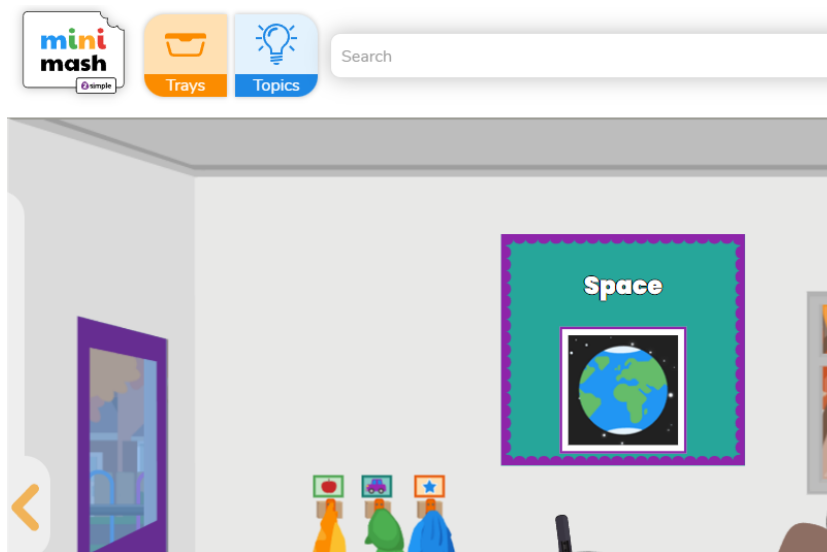
Tel: +44(0)208 203 1781 | Email: [support@2simple.com](mailto:support@2simple.com) | Twitter: [@2simplesoftware](https://twitter.com/2simplesoftware)

## Easter Eggs

The children can also click on other objects both inside and outside to cause simple sounds and animations, such as watering the plants, or the aeroplane in the sky. When the clock is clicked, it becomes larger so children can begin to learn how to tell the time, with options to switch from analogue to digital.

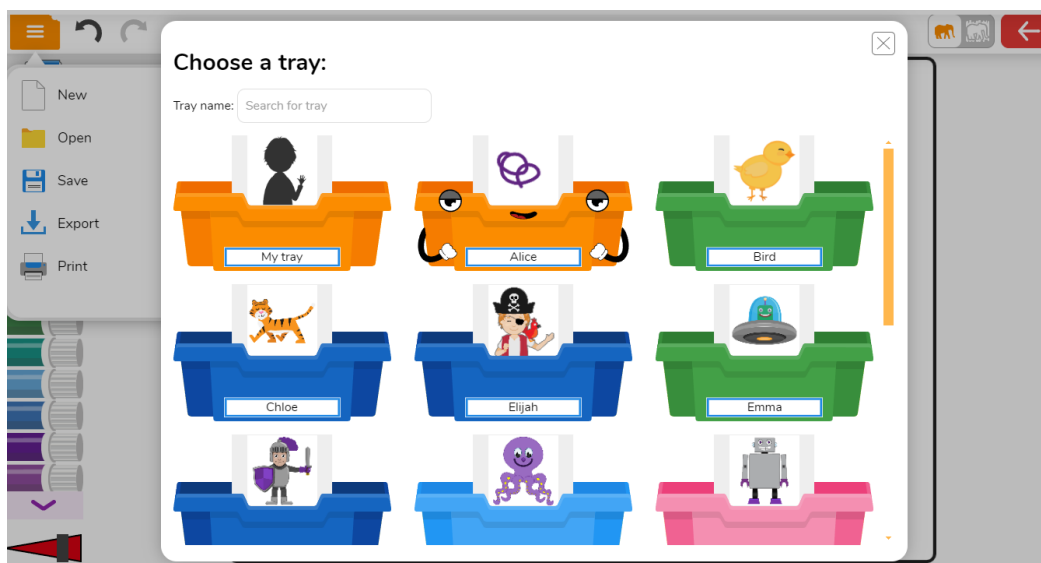
## Topics

Your child's teacher can set topics which contain activities linked to the topics relevant to your child's learning. Clicking on the Topics icon or display board in the classroom will bring up any current topics your child's class teacher has assigned.



## Trays and Saving

Any work that your child does on Mini Mash, excluding Simple City, can be saved. If you click on the orange icon at the top left of the screen or the red arrow on the top right, you will be given the option to 'Save'. Clicking here, you will see the pupil's trays. When your child is familiar with which tray is theirs, they will be able to save their work there independently.



**Need more support? Contact us:**

Tel: +44(0)208 203 1781 | Email: [support@2simple.com](mailto:support@2simple.com) | Twitter: [@2simplesoftware](https://twitter.com/2simplesoftware)